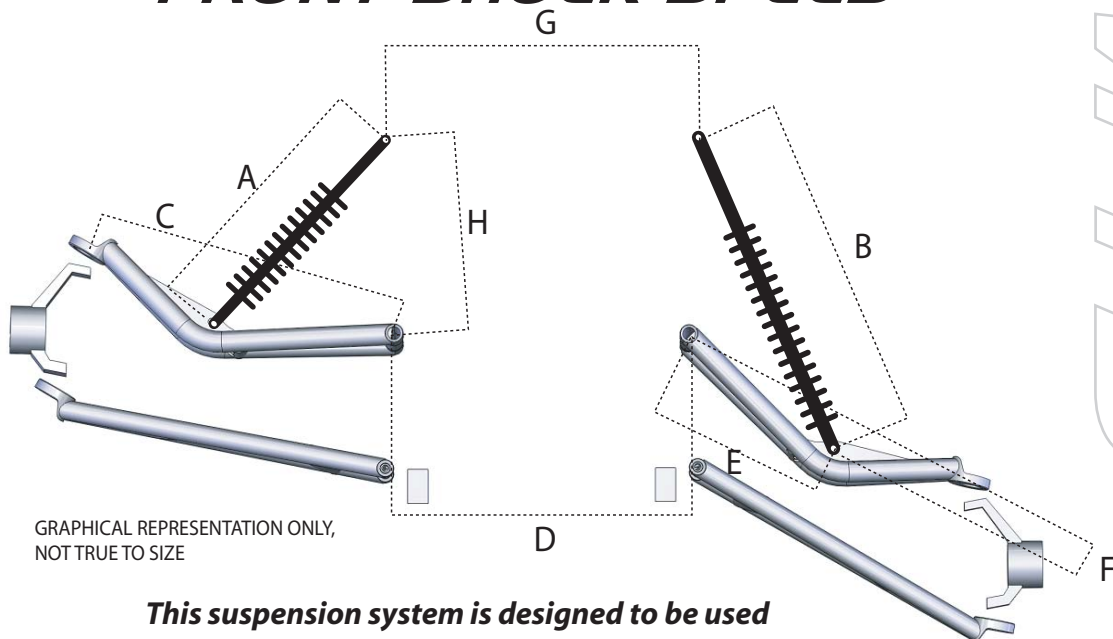


FRONT SHOCK SPECS

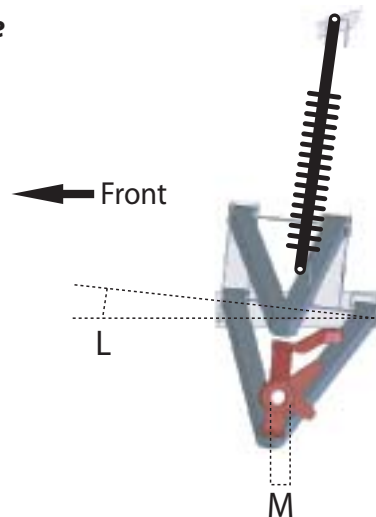


Size of A-Arms:
+4" wider per side

This suspension system is designed to be used with stock length shocks or equivalent. Heavier springs and different valving will most likely be required.

Dimensions

- A 14.125" Compressed length, MIN
- B 20.125" Extended length, MAX
- C 18.97" Upper a-arm length (between pivots)
- D 12.78" Distance between upper a-arm pivots
- E 10.60" Distance between a-arm pivot and shock mount
- F -1.97" Shock mount offset
- G 17.90" Distance between top shock mounts
- H 12.83" Distance between a-arm pivot and chassis shock mount
- L Stk Angle from horizontal to a-arm axis
- M 0.0" Front axle position forward from stock
- 3.50" Max spring diameter
- 6.0" Usable shaft travel
- 2.33 to 1 Static leverage ratio
- 14.00" Wheel travel
- 3.50" Ground clearance with 27" dia. tire



Shock Eye Details (same as stock)

Upper	Lower
Width= 1.25"	Width= 1.25"
Max Dia.= 2.0"	Max Dia.= 1.75"
Bolt Size= 10mm	Bolt Size= 10mm



Weight of Vehicle: 1400 to 1600 lbs, not including occupants
Weight Distribution: 53% to Rear, 47% to Front